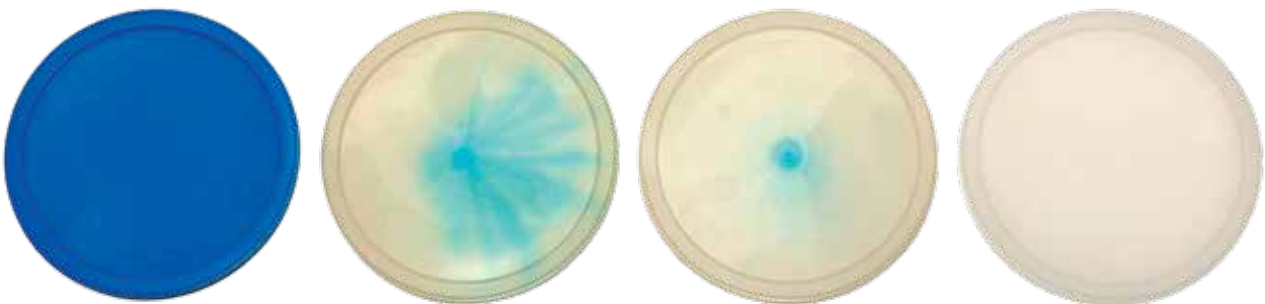


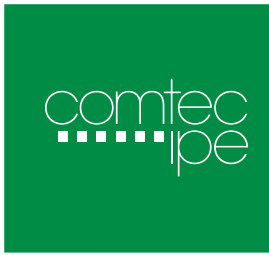
Don't just purge... *ULTRA PURGE!*™

Ultra Purge is a leading provider of purging compounds for injection moulding, hot runners, extruders and other plastic machinery applications. Ultra Purge can effectively reduce waste and downtime for your business. Ultra Purge is a ready-to-use nonabrasive, safe chemical purging compound.

Ultra Purge offers several distinct advantages

- Save money — Reduction of 40-70% on scrap
- Save time — Reduction of 50-80% on downtime
- Food Safe — Food grade certified and FDA approved
- No smell or liquid mess — Pellet form
- Machine Safe — nonabrasive
- Specific Formulation or General Purpose
- Classified as Green Material and Reusable
- Reliable — Endorsed by Husky





Don't just purge... **ULTRA PURGE!**[™]

Industry advantages:

- Food & Packaging:** Approved by FDA & EU Food Requirements.
- Medical:** Ultra Purge have passed the strict migration test to comply with EU food contact regulations.
- Technical:** Specialized solution that works with a wide variety of resins and temperatures.
- Electronics:** Suitable for high temperature applications. Very effective during material changes and with carbon buildup removal.
- Housewares:** Colourants and carbon deposits are softened and easily removed from extruders, injection units and hot runners.
- Automotive:** Fast and easy solution for dark to light colour changes.

PRODUCT GUIDE								
Grades	Ultra Purge P-O	Ultra Purge PET-E	Ultra Purge BP	Ultra Purge 5150	Ultra Purge 5160	Ultra Purge PC	Ultra Purge PMMA	Ultra Purge HT+
Temp. °C	170-300	190-320	170-380	160-350	190-320	220-340	200-280	250-400
Resin Range	PP, PE, HDPE, LDPE, LLDPE, HIPS, GPPS, TPO...	PET	PP, PE, HDPE, LDPE, LLDPE, HIPS, GPPS, TPO...	ALL RESINS WITHIN ABOVE TEMPERATURE RANGE	ABS, ASA, PA, GPPS, HIPS, PC, SAN, PBT, PET...	WHEN SWITCHING FROM ANY RESIN TO PC	WHEN SWITCHING FROM ANY RESIN TO PMMA, TRANSPARENT PA, CA, CAB	PPS, PSU, PEEK, ULTEM...
Ready-to-use	✓	✓		✓	✓	✓	✓	✓
Concentrate			✓					
Hot runners	✓	✓	✓	✓	✓	✓	✓	
PET Preform		✓						
EXTRUSION								
Screw & Die	✓	✓		✓	✓	✓	✓	✓
Blow Moulding				✓				

For technical support please consult COMTEC IPE



It is recommended to consult the technical data sheet of each grade.

Adelaide:	Unit 3B, 90-94 The Parade, Norwood, SA 5067	T: 1300768826
Melbourne:	Factory 6, 103 Garden Road, Clayton, VIC 3168	T: 1300768826
Sydney:	Suite 38, 20-28 Maddox St, Alexandria, NSW 2015	T: 1300768826
Singapore:	998 Toa Payoh North #04-23/26. S(318993)	T: (65) 6259 8486
New Zealand:	Agent: Hanlon Consulting www.hanlonconsulting.co.nz	T: (64) 7 827 8833